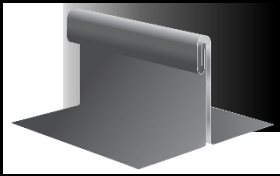


ARCHITECTURAL PROFILE EXAMPLES



Standing Seam &
Variations



Double Lock
Standing Seam



Shingle/Hook seam
& Flat Lock



Interlocking/Cassette
panels

Standing Seam:

The handcrafted traditional standing seam profile originates from Europe. Panels run vertically up the length of roof and walls and are then lock-seamed together by hand or simple machinery with hidden fixing clips in between adjoining panels. This profile system requires to be fully supported using treated plywood and building wrap as tradition stands. Monolithic in appearance with many advantages past looks.

Wall profiles can be varied in width to suit the elevation lengths and to provide a barcoded characteristic. Be careful to consider coil efficiency with your installer. Wall seam height can be adjusted to a 25mm height for more profile seam subtlety.

For variations and custom sizing to suit your design, contact us to see how we can help refer you to the right people.

EURAMAX Thicknesses: 0.80mm
General pan width ex 610mm coil: 500—530 mm



CONTACT

09 828 1814 | www.ambrometals.com | architectural@ambrometals.com

Double Lock Standing Seam:

Taking a single lock standing seam and doubling over again, this profile is used in low pitched situations down to 5 degrees in areas prone to freezing temperatures and high winds for a stronger seam detail. The more subtle seam detail creates a slimmer shadow line. Ensure the right metal and paint system is selected to meet the demands of fabrication.

EURAMAX Thicknesses: 0.80mm

General pan width ex 610mm coil: 500—530 mm



Roll/Batten Cap:

Reminiscent of standing seam profile from a distance with the flat European look also requiring full support. Roll cap and batten cap profiles provide a wider strength in look to the seam detail. Improved seam ventilation is also an added benefit. Suitable for roof and wall cladding. Both roll cap and batten cap profiles are fixed with concealed clips.

EURAMAX Thicknesses: 0.80mm

General pan width: custom

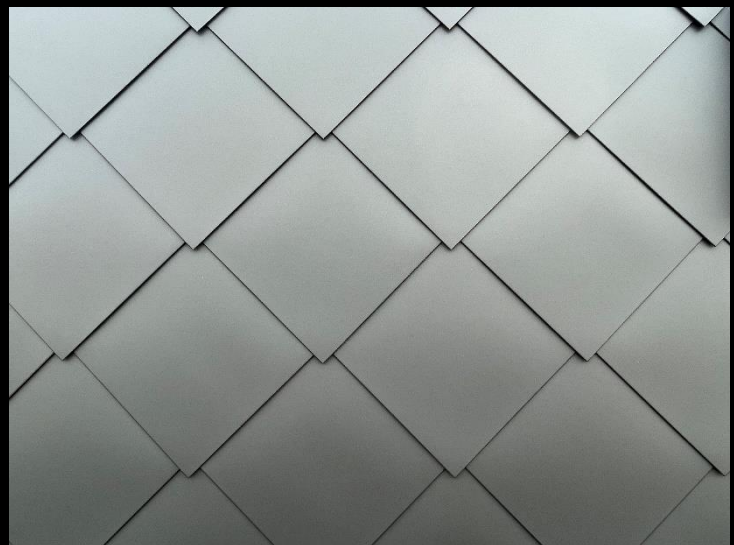


Shingle/Hook Seam & Flat Lock:

Metal shingles and tiles provide a modern look. The metal shape is folded into a tile then hooked together and fastened with clips to plywood to create the exterior shield. The variation creates an encapsulating appeal involving considerable labour to achieve. The profile offers great variety in shape and colour. It is a single skin solution that can be applied in many different varieties.

EURAMAX Thicknesses: 0.8mm

Panel Dimension: custom Variable in size & shape



CONTACT

09 828 1814 | www.ambrometals.com | architectural@ambrometals.com

AMBROMETALS®

Interlocking/Cassette Panels:

Interlocking panels are a contemporary cladding system, which can completely change the overall appearance of a build. Interlocking Panel System can be installed horizontally or vertically and by using different panel sizes and playing with the seam height.

A simple interlocking groove locks the panels together and allows them to be adjusted through a recess or express joint. They boast ventilated air gaps, which allow the panels to be tailored for a range of internal and external design projects. Overall, it is a concealed fixed cladding system that offers a sleek and modern approach to any new build. This profile is for Cladding & Soffits only.



EURAMAX Thicknesses: 0.80-2.0mm

Pan width: Dependent on thickness

CONTACT

09 828 1814 | www.ambrometals.com | architectural@ambrometals.com

AMBROMETALS